

0969-001

THIS INSTRUMENT PREPARED BY
 DAVID P. LINDLEY
 OF
CAULFIELD and WHEELER, INC.
 SURVEYORS - ENGINEERS - PLANNERS
 7900 GLADES ROAD, SUITE 100
 BOCA RATON, FLORIDA 33434 - (561)392-1991
 CERTIFICATE OF AUTHORIZATION NO. LB3591

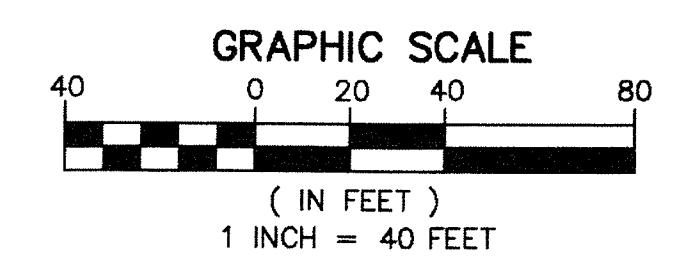
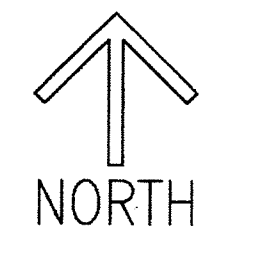
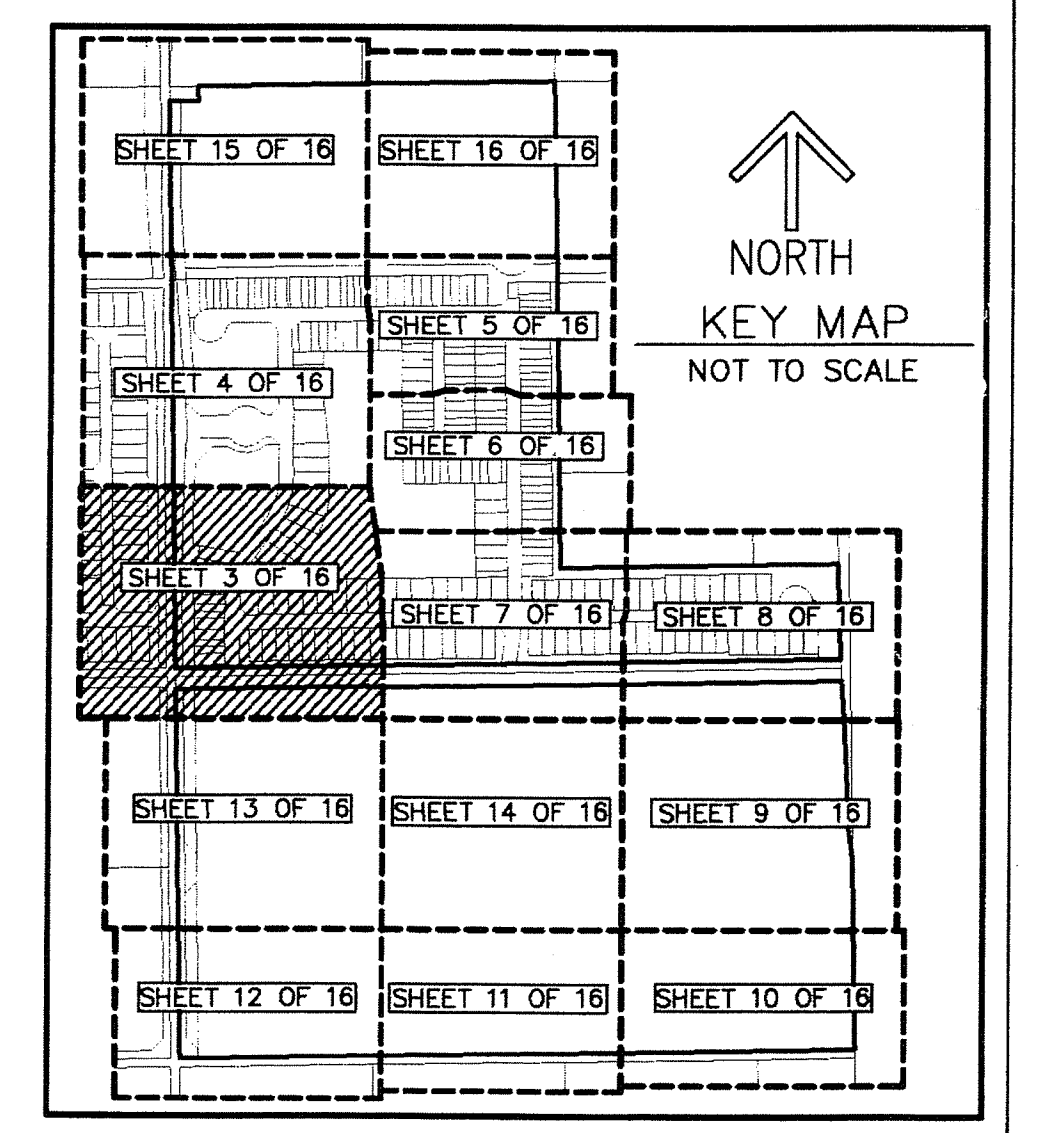
FIELDS AT GULFSTREAM POLO PUD - PLAT ONE

A PLANNED UNIT DEVELOPMENT
 BEING A REPLAT OF A PORTION OF BLOCK 28, PALM BEACH FARMS COMPANY PLAT NO. 3,
 AS RECORDED IN PLAT BOOK 2, PAGES 45 THROUGH 54, OF THE PUBLIC RECORDS OF PALM BEACH COUNTY, FLORIDA,
 LYING IN SECTION 29, TOWNSHIP 44 SOUTH, RANGE 42 EAST, PALM BEACH COUNTY, FLORIDA

82

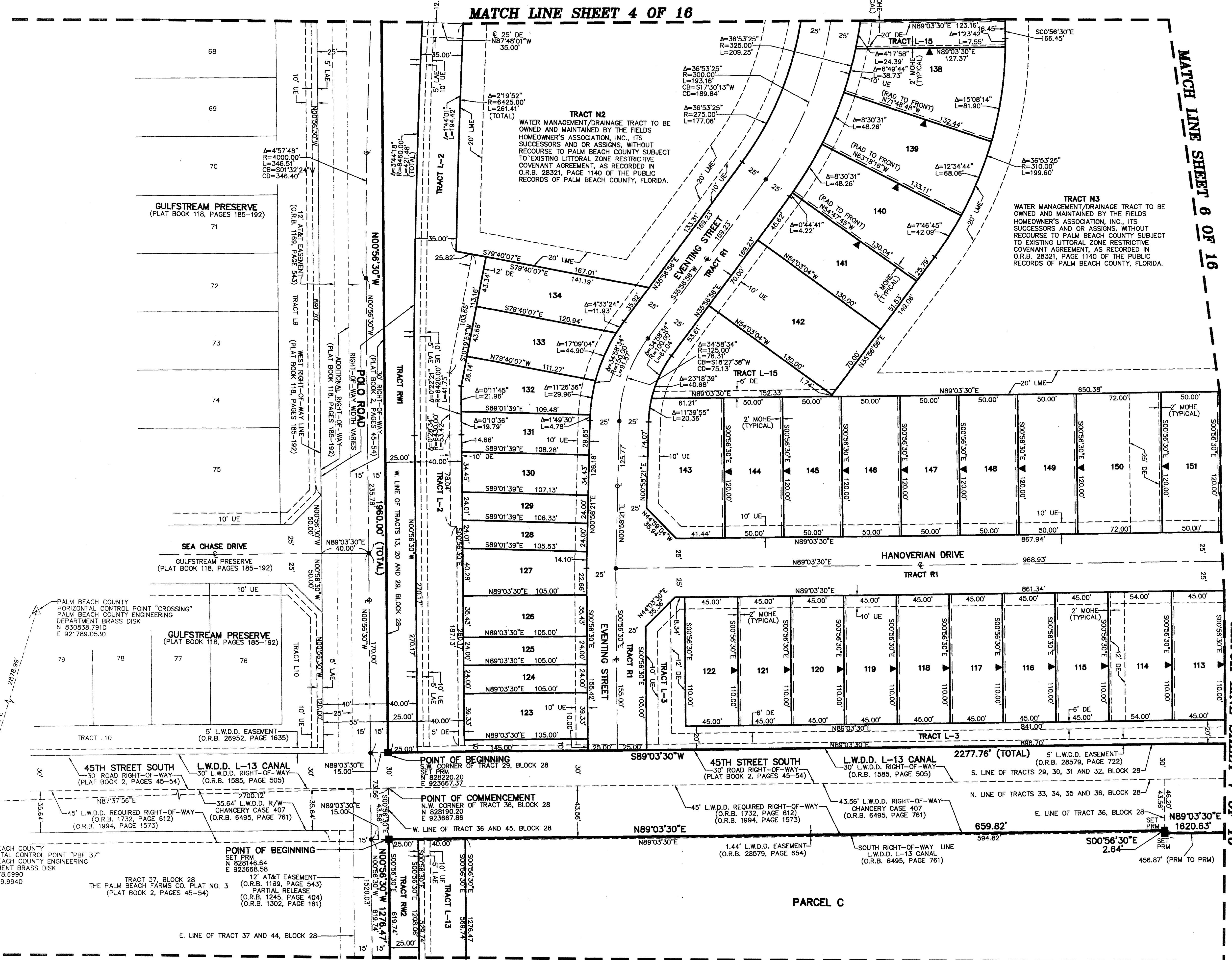
STATE OF FLORIDA
 COUNTY OF PALM BEACH
 THIS PLAT WAS FILED FOR
 RECORD AT _____ M.
 THIS _____ DAY OF _____
 A.D. 20____ AND DULY RECORDED
 IN PLAT BOOK _____ ON
 PAGES _____ AND _____
 SHARON R. BOCK
 CLERK AND COMPTROLLER
 BY: _____
 DEPUTY CLERK

SHEET 3 OF 16



NOTES
COORDINATES, BEARINGS AND DISTANCES
 COORDINATES SHOWN ARE GRID
 DATUM = NAD 83 (90/98 ADJUSTMENT)
 ZONE = FLORIDA EAST
 LINEAR UNIT = US SURVEY FEET
 COORDINATE SYSTEM 1983 STATE PLANE
 TRANSVERSE MERCATOR PROJECTION
 ALL DISTANCES ARE GROUND
 SCALE FACTOR = 1.0000236
 GROUND DISTANCE x SCALE FACTOR = GRID DISTANCE
 BEARINGS AS SHOWN HEREON ARE GRID DATUM,
 NAD 83 (90/98 ADJUSTMENT), FLORIDA EAST ZONE.

LEGEND/ABBREVIATIONS
 C - CENTERLINE
 Δ - DELTA (CENTRAL ANGLE)
 L - CHORD BEARING
 CD - CHORD DISTANCE
 DE - DRAINAGE EASEMENT
 E - EASTING
 L - ARC LENGTH
 LAE - LIMITED ACCESS EASEMENT
 LB - LICENSED BUSINESS
 LMAE - LAKE MAINTENANCE ACCESS EASEMENT
 LME - LAKE MAINTENANCE EASEMENT
 LSE - LIFT STATION EASEMENT
 L.W.D.D. - LAKE WORTH DRAINAGE DISTRICT
 N - NORTHING
 MOHE - MAINTENANCE AND OVERHANG EASEMENT
 O.R.B. - OFFICIAL RECORD BOOK
 PCBUE - PALM BEACH COUNTY UTILITY EASEMENT
 R - RADIUS
 RCE - ROADWAY CONSTRUCTION EASEMENT
 (RAD) - INDICATES RADIAL LINE
 UE - UTILITY EASEMENT
 SWE - SIDEWALK EASEMENT
 ▲ - INDICATES "ZERO" SIDE OF LOT LINE
 ■ - PERM - DENOTES PERMANENT REFERENCE MONUMENT
 ▲ - INDICATES RADIAL LINE
 ■ - 4" x 4" x 24" CONCRETE MONUMENT WITH ALUMINUM DISK STAMPED "C&W PRM LB3591"
 ● - PCP - DENOTES PERMANENT CONTROL POINT
 ▲ - NAIL AND METAL DISK STAMPED "PCP LB3591"



MATCH LINE SHEET 4 OF 16

MATCH LINE SHEET 6 OF 16

MATCH LINE SHEET 7 OF 16

MATCH LINE SHEET 13 OF 16

PALM BEACH COUNTY
 HORIZONTAL CONTROL POINT "CROSSING"
 PALM BEACH COUNTY ENGINEERING
 DEPARTMENT BRASS DISK
 N 830838.7910
 E 921789.0530

PALM BEACH COUNTY
 HORIZONTAL CONTROL POINT "PBF 37"
 PALM BEACH COUNTY ENGINEERING
 DEPARTMENT BRASS DISK
 N 828078.8990
 E 920969.9940

POINT OF BEGINNING
 SET PRM
 N 828146.64
 E 923668.58
 12' AT&T EASEMENT
 TRACT 37, BLOCK 28
 THE PALM BEACH FARMS CO. PLAT NO. 3
 (PLAT BOOK 2, PAGES 45-54)
 PARTIAL RELEASE
 (O.R.B. 1245, PAGE 404)
 (O.R.B. 1302, PAGE 161)

POINT OF COMMENCEMENT
 N.W. CORNER OF TRACT 36, BLOCK 28
 N 828190.20
 E 923667.88
 W. LINE OF TRACT 36 AND 45, BLOCK 28

POINT OF BEGINNING
 CORNER OF TRACT 29, BLOCK 28
 N 828190.20
 E 923667.88

POINT OF BEGINNING
 S.E. CORNER OF TRACT 30, 31 AND 32, BLOCK 28
 N 828190.20
 E 923667.88

POINT OF BEGINNING
 S.E. CORNER OF TRACT 36, BLOCK 28
 N 828190.20
 E 923667.88

PARCEL C